

SERIES - EN

ENCLOSED BODY PINCH VALVE

RHINOFLEX™

MANUFACTURED IN INDIA SINCE 2004 FOR SEVERE SERVICE SLURRY



APPLICATIONS

- Highly Abrasive /Corrosive Mineral Slurries
- Powders or Granular substances
- Power Stations
- Waste and Water Treatment
- Chemicals and Cement
- Pulp and Paper
- Pneumatic Conveying

OPTIONAL EXTRAS

- Dust Covers : PVC Bellows and Spindle cover.
- Instrumentation : Proximity Switches - Pneumatic Solenoid Valves.
- Stroke Adjustor for control applications

FEATURES

- Fully Cast Ductile Iron body and bonnet.
- Dual pinch mechanism
- Bubble-Tight shut-off even on trapped solids
- 100% Full bore full flow or reduced /conical bore for control applications.
- No Packing, less maintenance
- Fast and Easy field replaceable sleeve
- On-Off or Control applications

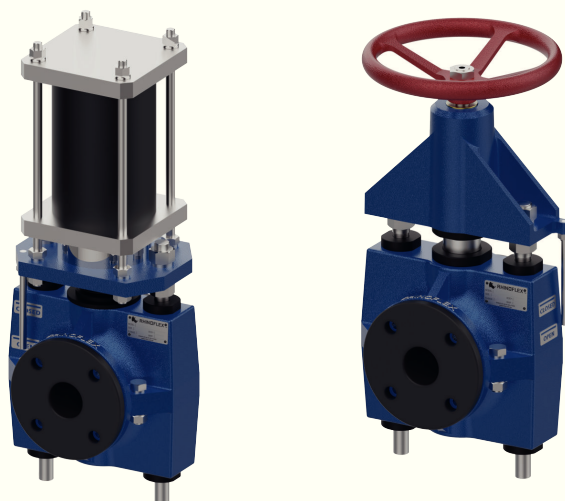
ACTUATORS

- Handwheel/bevel gear box
- Pneumatic Double Acting/Fail safe
- Electric Actuators/Fail safe
- Hydraulic Actuators/Fail safe

The RHINOFLEX EN-Series is a compact, rugged and robust Pinch Valve. These valves are reliable and maintenance free and are engineered and designed for highly abrasive and aggressive slurry applications. The series has a simple yet trustworthy design, consisting of two pinch bars that open and close the Elastomer sleeve.

The field replaceable sleeve is the only wetted part which is reinforced and fabricated using high quality elastomer materials, and provides for smooth operation with no clogging, jamming, etc., and can even close tight on solids. EN-series pinch valve is bidirectional and full bore. In the open position the valve will be as part of the pipe line, but when closed the simple standard mechanical operation using double pinch bar mechanism to compress the elastomer sleeve from top and bottom closing simultaneously at the centre to provide a bubble tight shutoff.

The RHINOFLEX 'Series-EN' Pinch Valve are fully flanged and can be drilled to suit all standard drilling patterns (ANSI, BS, TABLE D/E etc). With instrumentation, this valve can be used as a control valve and is available in a wide range of sleeve elastomer options.



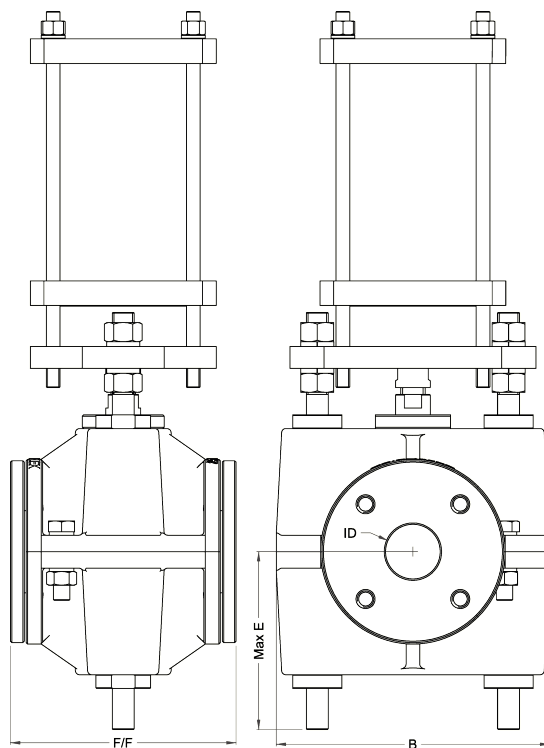
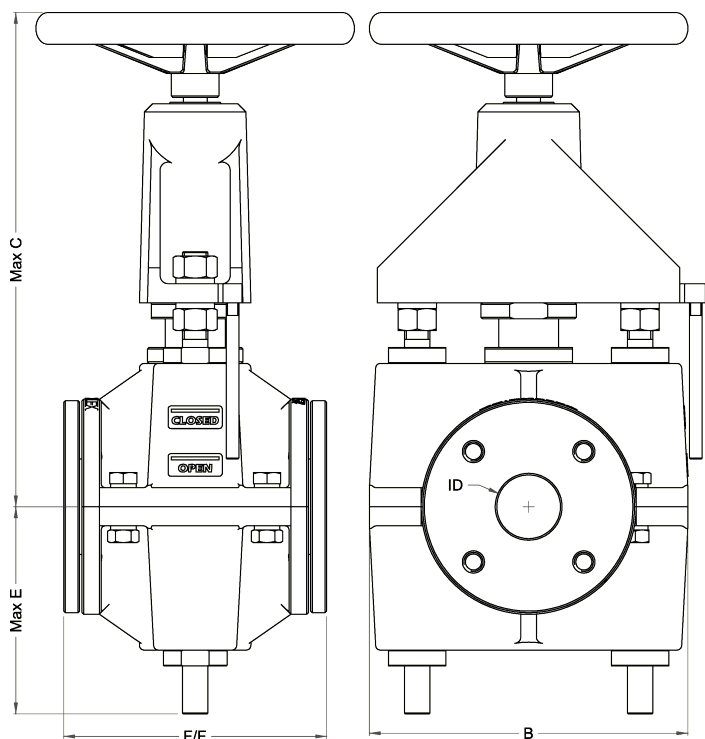
SERIES - EN

ENCLOSED BODY PINCH VALVE

RHINOFLEX™

MANUFACTURED IN INDIA SINCE 2004 FOR SEVERE SERVICE SLURRY

DIMENSIONS



SPECIFICATIONS

Valve Size (ID)		F/F		B		C		E		Pressure (bar)	Weight Manual Valves (Kg)	Weight Actuated Valves (Kg)
Inch	mm	Inch	mm	Inch	mm	Inch	mm	Inch	mm	Bar	FE	FE
1	25	6 1/2	165	5	200	10	255	3 1/2	87	1-25	11	8
1 1/4	32	6 1/2	165	5 1/2	200	10 1/4	260	3 1/2	90	1-25	14	10
1 1/2	40	6 1/2	165	7	200	10 1/2	265	4 1/4	105	1-25	16	12
2	50	6 1/2	165	7 1/2	230	11	280	4 3/4	120	1-25	18	13
2 1/2	65	6 1/2	165	8 1/4	230	12 1/4	310	5 1/2	136	1-25	22	17
3	80	8	200	9 3/4	260	14 1/2	370	6 1/8	155	1-25	36	27
4	100	10	250	11	300	16 1/8	410	7	175	1-25	46	33
5	125	12 1/4	310	13 1/2	340	18 1/4	465	8 1/4	210	1-25	74	48
6	150	14 3/4	375	16	450	22	560	9 1/2	240	1-16	106	75
8	200	20	500	19	520	27 1/8	690	11 1/2	295	1-10	159	119
10	250	24 3/4	625	22 1/2	600	34	865	15	380	1-6	213	161
12	300	29 1/2	750	28 1/2	720	40 1/4	1020	17 1/2	445	1	279	212

NOTE: All these dimensions are indicative only. Larger Sizes & Higher Pressures Available, Please Consult Office

RHINOFLEX AUSTRALIA PTY LTD.
4/7 Holder Way, Malaga,
Western Australia - 6090
Ph: +61 420832225
sales@rhinoflex.com.au
web: rhinoflexvalves.in



RHINOFLEX INDIA PVT.LTD.
NO. LG-15, Ashoka Mall,
Bund Garden Road, Pune 411001, India
Mob: +91 9699306878
Ph: +91 20 47159882
sales@rhinoflexvalves.in
web: rhinoflexvalves.in